



*Save
The
Date*

March 4th, 2026



IN THIS NEWSLETTER

Executive Director Letter	2
Bright Futures Successes	3
KPATA Trainings	4-7
Advocacy Lunch & Learn	8
FAN Training	9
Dr. Ross Greene	10
Blue Ribbon Recipients	11
Just 10 Minutes	12
Capitol Save the Dates	13
PAT Across Kansas	14-19
Supporting Care Providers	20-21
Bright Futures Program Meeting	22
Breastfeeding Message	23
Did you know / Upcoming events	24



December



A NOTE FROM THE EXECUTIVE

DIRECTOR

ITEMS TO HIGHLIGHT

- KANSAS HOME VISITING DAY AT THE CAPITOL IS MARCH 4TH
- THIS MONTH'S NEWSLETTER IS PACKED FULL OF AMAZING TRAINING OPPORTUNITIES - CHECK THEM OUT!

Dear KPATA Members -

*"Frost upon a windowpane and softly falling snow
Warmth beside a crackling
fire while biting north winds blow
Books and blankets, steaming tea
The soft glow of an ember
Candlelight and cozy nights ~
The magic of December."*

- Laura Jaworski

December always has a way of reminding us of the moments that make life meaningful. The twinkle of lights, the laughter of children, and the shared warmth of community all come together to create the true magic of this season.

We feel that magic every day in the families and caregivers we serve - from the first smiles in our home visits to the creative ways parents nurture curiosity and learning. We are reminded that the magic of PAT home visit work isn't just in milestones or achievements—it's in the everyday moments: a parent discovering new ways to support their child, a child gaining confidence, or a family building memories that will last a lifetime.

Wishing you and yours a magical month!

Regards,

Hilary Koehn

Hilary Koehn
Executive Director



BRIGHT FUTURES SUCSESSES

SUCCESS STORY

Mom continues to actively support her daughters in developing self-regulation skills and establishing clear boundaries and expectations. She and her younger child have recently begun receiving services through the Infant Toddler program. Mom expressed appreciation for the combined support from both Parents as Teachers and Infant Toddler, noting that she looks forward to and welcomes visits from both programs.

She has also started working with a new therapist and reports a positive experience. Mom shared that she has learned new coping strategies to manage her anxiety and no longer requires medication, noting that she had been experiencing negative side effects and is now feeling better since discontinuing its use. She added that both children continue to do well in daycare and preschool.

- 5 NEW REFERRALS
- 81 ACTIVE REFERRALS
- 38 PARTICIPATING PROGRAMS



KPATA Trainings

ZOOM SAFE SLEEP TRAINING

Provided for free by Safe Sleep
Instructor Jenny Johnston

December 3rd @
5:00 pm

- ✓ Meets Bright Futures Safe Sleep Requirements
- ✓ A Pre and Post Test will be provided, once completed a certificate of completion will be emailed out



REGISTER HERE



KPATA Trainings

This Training is for KPATA Members



Promoting Protective Factors for Adult and Child Survivors of Domestic Violence



Presented By:

Kristina Scott, LMSW

Child Welfare Project Coordinator

Kansas Coalition Against Sexual & Domestic Violence (KCSDV)



During this virtual session, participants will learn the key protective factors that have been identified nationally to reduce the risk factors of domestic violence for adult and child survivors.

Learning Objectives:

- Describe at least two (2) protective factors for adult and child survivors of domestic violence.
- Identify at least three (3) safety and protective actions adult survivors use to keep their children safe, to include in documentation.
- Identify at least three (3) behaviors those who have caused harm use, that impact child and family functioning, to include in documentation.
- Utilize the Domestic Violence Manual for Child Welfare Professionals to apply best practices when working with families experiencing domestic violence.

JANUARY 15, 2026

10:00–11:30

REGISTER HERE

You will register on KCSDV's website

KPATA Trainings

Training for KPATA Members



HOPE Training

(Healthy Outcomes from
Positive Experiences)



Explore how everyday positive experiences can build resilience and support healthy development in children and families. This training introduces the core ideas behind the HOPE (Healthy Outcomes from Positive Experiences) framework and shows how simple, strengths-focused practices can make a meaningful difference during home visits and family interactions. Participants will learn how to identify existing strengths, nurture protective factors, and reinforce what's going well in the lives of the families they serve. You'll leave with practical tools, real-world examples, and encouragement to integrate HOPE into your day-to-day work with confidence and clarity.

***Presented By: Dana Book
KCSL Training Specialist***



Kansas Children's Service League
Stronger families start here.



February 19th

1:00 PM – 3:00 PM

REGISTER HERE



2025-2026

KPATA Training Calendar

Remember!

A KPATA Membership is required in order to attend our trainings.

You can purchase your 2025-2026 Membership (Training Pass) below!

[Register](#)



TRAINING SCHEDULE
PARENT EDUCATORS AND COORDINATORS
KPATA BRIGHT FUTURES 2025-2026

JULY	AUGUST	SEPTEMBER
Share & Show Our Favorites Book, activity enhancement, resource, song or fingerplay 7/17 1:00-2:30 PM	CONVERSATIONS ^{KS} Communities 8/21 1:00-2:00 PM	PAT Engage Starting at Square 1 9/19 1:00-2:30 PM
OCTOBER	NOVEMBER	DECEMBER
Understanding NEURODIVERSITY SARAH JONES/KCCTO 10/3 1:00-2:30 PM	Motivational Interviewing Refresher Scott Kerby 11/14 1:00-2:30 PM	CATCH UP
JANUARY	FEBRUARY	MARCH
Intimate Partner Violence survivor-informed insights Kristina Scott-KCSDV 1/15 10:00-11:30 AM	HOPE TRAINING Dana Book/KCSL 2/19 1:00-3:00 PM	MATERNAL DEPRESSION Robert Ammerman/CCHMC MOVING BEYOND DEPRESSION TRAINOR 3/27 1:00-2:00 PM
APRIL	MAY	OTHER NOTES:
Child Abuse and Neglect Valeria Adame/KCSL 4/9 1:00-2:30 PM	Vaping Products and Treatment Resources Matthew Schrock/KANQUIT 5/7 1:00-2:00 PM	<ul style="list-style-type: none">* Please use Dec. to catch up on a recorded training* No Training in June

★ INDICATES A PATNC QUALITY STANDARD TRAINING REQUIREMENT

 **kpata**
KANSAS PARENTS AS TEACHERS

Advocacy Lunch & Learn

KANSAS PARENTS AS TEACHERS VIRTUAL

Lunch & Learn

*Pack your lunch and join us for a conversation
with the KPATA Advocacy Committee about:*

Advocacy Tips

&

Preparing for Home Visiting Program

Advocacy Day on March 4th



**Lunch
Break**

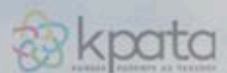
January 29th

12:00 - 1:00

REGISTER IN ADVANCE BY CLICKING

THE LINK BELOW:

[ZOOM REGISTRATION](#)



Facilitated Attuned Interactions Training

Erikson Institute

FAN (Facilitating Attuned Interactions) Training

What is FAN?

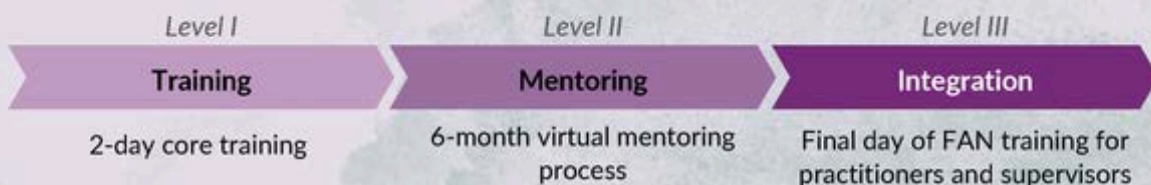
FAN (Facilitating Attuned Interactions) is a conceptual model and communication tool designed to help build stronger, more responsive relationships among professionals in the early childhood workforce. FAN emphasizes attunement, connection, and reflective practice as keys to supporting change.



Who It's For

This training is designed for individuals who provide coaching, consultation, and/or supervision to Early Childhood Care and Education (ECCE) Professionals and families.


Training Structure



Cohort Schedule

- Cohort 2: January, 2026
- Cohort 3: July 2026

Training Details Cohort 2

-  January 7 - 8, 2026
-  9:00 AM - 4:00 PM
-  K-State Alumni Center

Apply Now



Visit our application page to learn more about FAN training and complete the registration form.

<https://kccto.org/fan-training/>



Apply by December 12, 2025



Save the Date!

Dr. Ross Greene

When it comes time to register, you will need an account in Cape. You can set that up in advance you'd like to at this link: [Registration](#) | [Cape Portal](#)

A Premier Professional Development Opportunity

SAVE THE DATE

Join us for a powerful day of learning with Dr. Ross Greene, renowned expert, practitioner, and author of *The Explosive Child* and other influential books for families and educators. Discover practical, collaborative strategies to better understand and support children—and the adults who care for them—when social, emotional, or behavioral challenges arise.

 **April 17, 2026**
9:00 AM - 3:00 PM

 Manhattan, KS
K-State Alumni Center

Stay Informed
More Details Coming Soon!



www.kccto.org/dr-ross-greene



Dr. Ross W. Greene
Psychologist & Author

KANSAS STATE UNIVERSITY | College of Education KANSAS STATE UNIVERSITY | College of Health and Human Sciences KCCTO Kansas CHILD CARE IN KANSAS Program Funding Partner

KS PAT Blue Ribbon Recipients



Just 10 Minutes



Fill out our form
to share your
ideas with us!



Submit your idea



AT JUST 10 MINUTES, WE BELIEVE EVERY CHILD DESERVES TO FEEL DEEPLY CONNECTED TO THEIR FAMILY. SMALL MOMENTS OF UNDISTRACTED INTERACTION CAN MAKE A POWERFUL IMPACT ON A CHILD'S EMOTIONAL WELL-BEING, BRAIN DEVELOPMENT, AND SOCIAL SKILLS.

WE WOULD LOVE TO HEAR YOUR IDEAS OF FUN FAMILY-FRIENDLY AND SCREEN-FREE ACTIVITIES A CHILD CAN ENJOY WITH THEIR FAMILY IN "JUST TEN MINUTES!"! FILL OUT OUR FORM BELOW TO SHARE YOUR THOUGHTS!

Days at the Capitol

EARLY LEARNING ADVOCACY
DAY AT THE KANSAS
STATE CAPITOL

**FEB.
25TH
2026**

HOME VISITING PROGRAM
ADVOCACY DAY AT THE
KANSAS CAPITOL

**MAR.
4TH
2026**

**SAVE
THE
DATES**





PAT ACROSS KANSAS SUCCESS STORIES



This family recently arrived in the United States and has been actively connecting with local resources to support each member's needs. The mother, who currently does not drive or work, is highly motivated to gain more independence and social connection by learning to drive.

Their three-year-old, who has developmental delays across several areas, was successfully connected to preschool and therapeutic services with support from their Parent Educator. Now that he has transitioned into preschool, the Parent Educator is helping mom begin the process of accessing driving resources so she can build independence, engage more fully in the community, and potentially pursue employment in the future.

We are proud of this family's progress and excited to continue supporting their goals.





PAT ACROSS KANSAS SUCCESS STORIES



After hearing an inspiring presentation at the Home Visiting Conference, one of our Parent Educators immediately reached out with the idea of partnering with a Foster Grandparent program.

Coincidentally, that same day the program contacted us to ask whether two grandmothers could support our work.
Perfect timing!

We've since welcomed our first PAT Grandma, who will begin by helping at our Group Connections and may join visits at our affiliate site in the future. A second grandmother, who is unable to travel, will support us by making homemade toys and preparing activity bags for families. We're excited about this new partnership and the meaningful support it will provide to our program and the families we serve.





PAT ACROSS KANSAS SUCCESS STORIES

During a visit, a parent expressed concerns about her 11-month old child's language use regressing. She equated this regression to her return to daycare following summer break. Mom had observed upon pick up and drop off the use of television to entertain the children at those times. Being a school-based daycare, Mom was hesitant to express her concerns to the daycare staff.

The Parent Educator listened to Mom's concerns, and shared that she happened to be attending a training led by Angie Neal, MS, CCC-SLP, called "Screen Time and Young Minds." I told Mom, I expected to get helpful tips from an expert on this topic. During the course of the training, I asked Angie about this situation, and she offered wonderful information and advise how to help this parent. Angie was 100% correct when she said "You don't know what you don't know, and until you know better, you do better." With Angie's permission, I shared slides from the presentation with the parent so that she could provide the daycare staff solid information to help them understand the reasons as to why they should be limiting screen time.

At the next visit, Mom reported that she shared the information with the daycare staff, and that she has already seen relevant changes in screen use, and also her daughter's speech development. She is using more words again! I take this as a Win-Win situation!



PAT ACROSS KANSAS SUCCESS STORIES



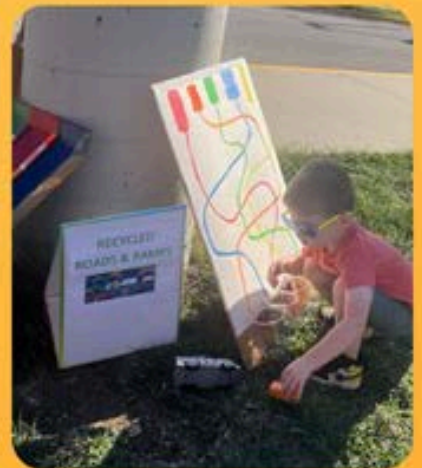
At one of our past Group Connections events, two moms who had never met before discovered they had children around the same age—and quickly realized how much they had in common. What began as a simple conversation during an activity turned into exchanging numbers, planning play dates, and building a supportive friendship outside of PAT. A few months later, they shared that their connection had grown even stronger: they had joined a gym together to support each other in their mutual goals of improving health and fitness. What started as a single group event has become an ongoing source of encouragement, accountability, and community for both families.



PAT ACROSS KANSAS GROUP CONNECTIONS

OLATHE

In October we hosted our first "Wheelie Big Fun" group connection. We had 7 different big trucks or cars for families to explore, along with other movement and transportation activities for children ages 0-5. Children could "ride" in a different public safety vehicles and meet the policeman, firefighter, and recycle truck driver (a BIG hit!). Families learned of ways to make homemade transportation activities at home with recycled cardboard. We had over 160 people attend - our biggest event ever!



For the last two years, we've started a twice-monthly activity called PAT Explorers. We do one daytime and one evening event at a local place for families to gather together and "explore". The idea is for families to try new places around the community and know they have a group to meet there, so they don't have to explore on their own. We often go to kid-friendly parks, various libraries, or community events like the annual Monarch pollinator prairie event with the K-State Extension group. Our goal is to connect our families to the community so they build their resources and social connections, and help the community.



PAT ACROSS KANSAS GROUP CONNECTIONS

GREENBUSH

We cooked up some fun at our collaborative Group Connection between USD 251, 252 and 253 Parents as Teachers Lyon County, USD 253 Mobilizing Literacy, USD 253 Migrant Services, Healthy Families, Emporia Zoo, Prophet Aquatic Research and Outreach Center - ESU, Lions Club of Emporia, New Day Play Cafe and the Emporia Public Library to celebrate Kansas Reads to Preschoolers. Attendees participated in a book reading, literacy learning and crafts using this year's selection, "Little Nita's Big Idea" by Anna W. Bardaus. The book tells of a little girl who dreams of making the world's largest fruit salad. In the spirit of the fable, "Stone Soup," the book explores both healthy foods and the beauty of collaboration. Each child received their own copy of "Little Nita's Big Idea," generously provided by the Kiwanis Club of Emporia.



SUPPORTING CARE PROVIDERS

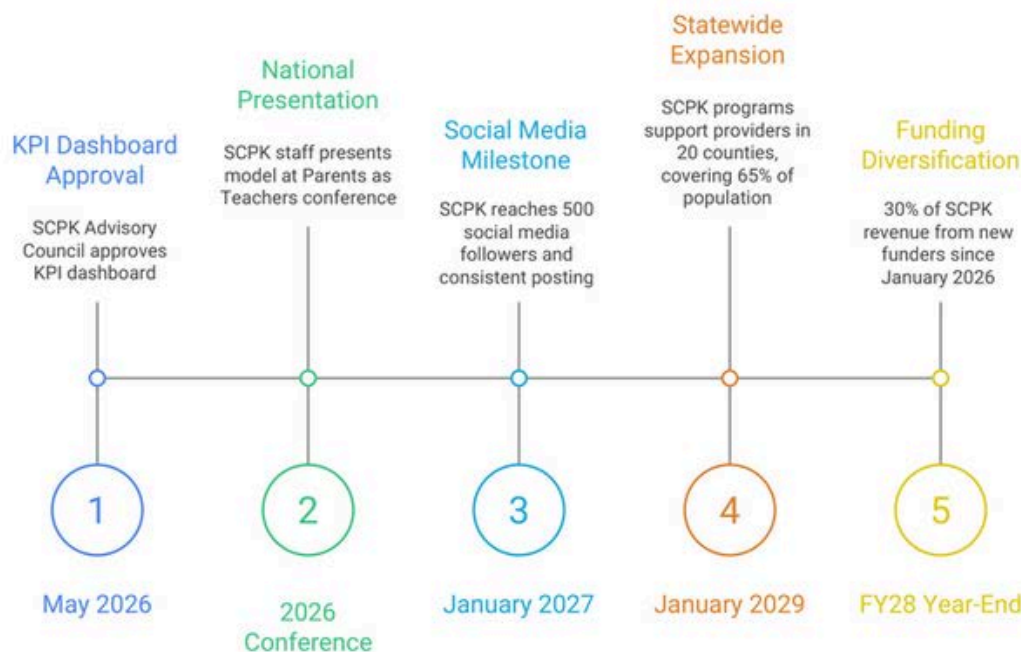
Supporting Care Providers of Kansas (SCPK) Sets Bold Three-Year Strategic Vision!

We have some exciting news to share! The Supporting Care Providers of Kansas Advisory Council met in November and officially confirmed the strategic objectives that will guide our work over the next three years. These ambitious goals represent a commitment to expanding our reach, enhancing our impact, and strengthening our foundation as an organization.

The Advisory Council Committees will be meeting in January 2026 to determine the specific strategic initiatives and action steps needed to achieve these objectives.

Here is a look at the five core objectives for the SCPK strategic plan:

SCPK Strategic Objectives Timeline (2026-2029)



SUPPORTING CARE PROVIDERS



Calling Johnson and Wyandotte County FFN Care Providers!



We are currently enrolling FFN care providers in Johnson and Wyandotte County communities! If you know someone providing Family, Friend, and Neighbor care for children birth to five who would like more information on program enrollment, please reach out to Maria at mrrios@kpata.org or call/text 913-731-4834.



Bright Futures Program Meeting

Save the Date

**BRIGHT FUTURES
PROGRAM MEETING**

**JANUARY 13TH, 2026
1:00PM - 2:30PM**

*Registration
details coming
soon!*

Breastfeeding Message of the Month

NORMALIZE BREASTFEEDING!



Kansas
Breastfeeding
Coalition, Inc.

HAVE AND READ BREASTFEEDING-FRIENDLY BOOKS TO CHILDREN.

AS YOU LOOK FOR NEW BOOKS TO READ TO CHILDREN IN YOUR CHILD CARE PROGRAM, CONSIDER BOOKS THAT NORMALIZE BREASTFEEDING. AN IMPORTANT WAY TO SUPPORT BREASTFEEDING IS TO HELP THE CHILDREN IN YOUR CHILD CARE PROGRAM LEARN THAT BREASTFEEDING IS A NORMAL WAY TO FEED A BABY. THIS MEANS PROVIDING CHILDREN WITH LEARNING AND PLAY OPPORTUNITIES THAT INCLUDE BREASTFEEDING. THERE ARE MANY WONDERFUL BOOKS FOR CHILDREN THAT DO THIS, AND [THIS FLYER](#) LISTS SOME EXAMPLES. SUPPORT LITERACY AND BREASTFEEDING! READ A BREASTFEEDING-FRIENDLY CHILDREN'S BOOK IN YOUR PROGRAM!



Kansas
Breastfeeding
Coalition, Inc.

National Family Literacy Month



Normalize Breastfeeding

What have we been up to?

Did

YOU KNOW?



The KPATA Board recently gathered in Wichita for a special in-person retreat — the first time this year they have met outside of their usual monthly Zoom meetings.

Hilary and Amber thoughtfully designed the day based on board feedback, creating meaningful opportunities for members to:

- Connect with one another and discover the common threads that unite the group
- Strengthen community relationships and collaboratively problem-solve within KPATA's sphere of influence
- Review the KPATA Action Plan and envision bold, future possibilities for KPATA's reach

The retreat was filled with laughter, learning, and thoughtful reflection. Board members left feeling inspired and re-energized in their roles with KPATA!



December

UPCOMING EVENTS

DECEMBER

- 19TH - KPATA BOARD MEETING
- NO TRAININGS THIS MONTH - CATCH UP ON A RECORDING

JANUARY

- 13TH - BF PROGRAM MEETING
- 15ST - IPV TRAINING
- 16TH - KPATA BOARD MEETING

