



Learn
SOMETHING
- new -
EVERYDAY

Don't Miss Out!
April 23rd, 2025

*Details
inside!*



**Collaborative
Learning Day**

"MANY IDEAS GROW BETTER WHEN TRANSPLANTED INTO ANOTHER MIND THAN IN THE ONE WHERE THEY SPRANG UP."
-OLIVER WENDELL HOLMES, SR.

IN THIS NEWSLETTER

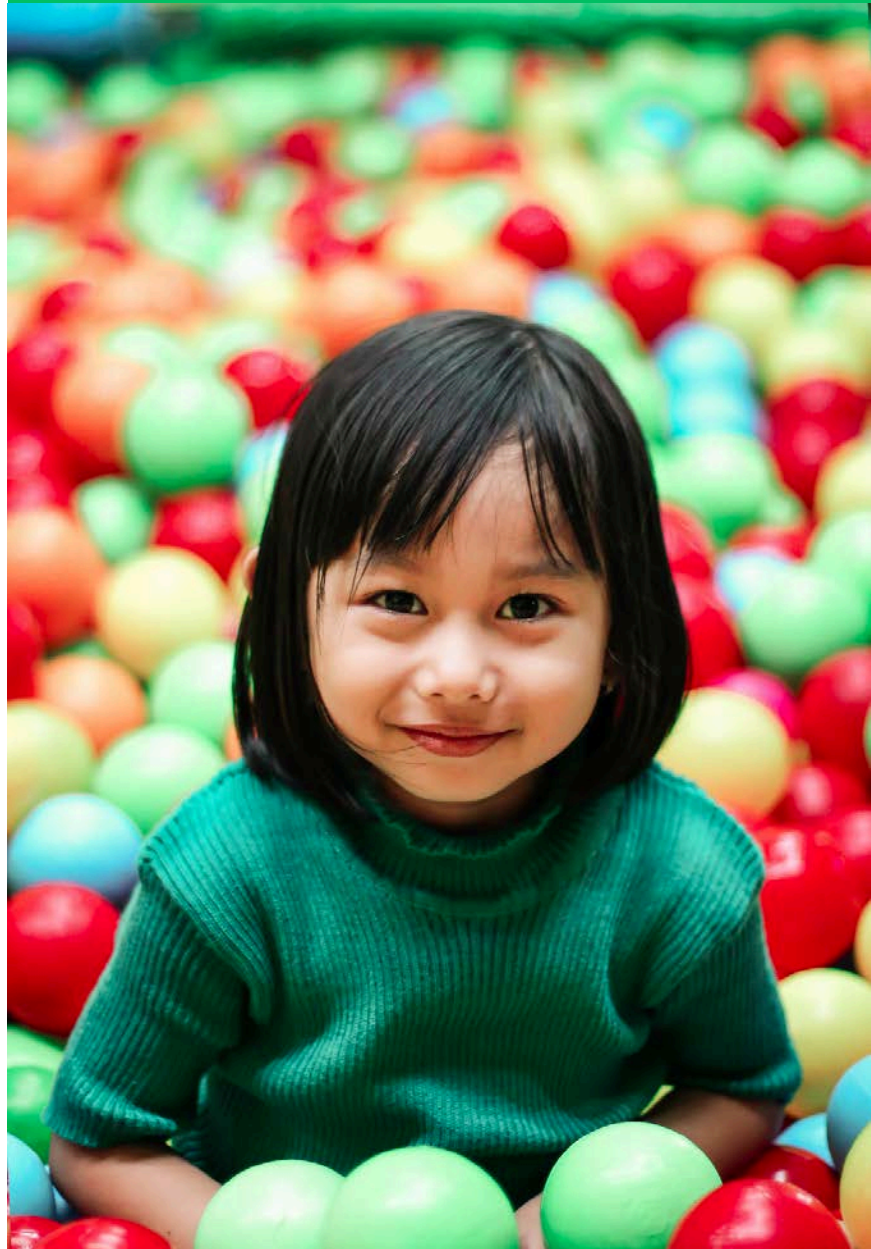
Bright Futures Successes	2
KPATA Collaborative Learning Day	3-4
KPATA & Partner Trainings	5-8
KAIMH Conference	9
KPATA Board	10
All Members Meeting	11
Breastfeeding Message	12
Did you know? / Upcoming events	13

BRIGHT FUTURES SUCSESSES

SUCCESS STORY

Mom had two in-person visits this month. Family moved to a new home and was excited for more space than in their previous apartment. At our visits we have been working on parent child interaction and trying to get mom more involved in the activities. We have been discussing sleep routines and how to get the children on a better sleep schedule. [Child 1] was asleep during both of our visits to the home this month. [Child 2] has been awake and is starting to crawl more and be curious about their surroundings. They like to play with toys and puts everything to their mouth. [Child 2] is doing well and mom was smiling at them and knew their wants and needs. They can chase after toys and they are almost pulling up to stand. Mom stated that [Child 1] is being seen by Rainbows and will be continuing services.

- 11 NEW REFERRALS
- 77 ACTIVE REFERRALS
- 39 PARTICIPATING PROGRAMS



KPATA Collaborative Learning Day

CHECK OUT THE [EVENT WEBSITE](#)
WITH ALL THE MOST UP TO DATE INFORMATION

REGISTRATION IS NOW OPEN!

April 23rd
8:30 am - 4:00 pm
KSTATE Alumni Center
1720 Anderson Ave
Manhattan, KS



WORKSHOP

style

Learning

WORKSHOPS INCLUDE:

- ✓ GROUP CONNECTIONS
- ✓ VISIT TRACKER/PAT ENGAGE PROGRAM
- PROMOTION/EVERYDAY ADVOCACY (VIRTUAL OPTION AVAILABLE)
- ✓ CUSTOMIZED PLANNING GUIDES (VIRTUAL OPTION AVAILABLE)
- ✓ DIFFICULT CONVERSATION STARTERS/FAMILY WELL-BEING

[REGISTER HERE](#)

REGISTRATION DEADLINE: APRIL 11, 2025

COST:
\$60

WATCH NOW

Collaborative Learning Day

"MANY IDEAS GROW BETTER WHEN TRANSPLANTED INTO ANOTHER MIND THAN IN THE ONE WHERE THEY SPRANG UP."
-OLIVER WENDELL HOLMES, SR.

Don't Miss Out

KPATA Collaborative Learning Day

CHECK OUT THE [EVENT WEBSITE](#)
WITH ALL THE MOST UP TO DATE INFORMATION



CALL and ASK FOR THE "Group Rate" for KPATA (KPT or KPTA)

RECOMMENDED HOTEL OPTIONS:

Holiday Inn and Suites

1641 Anderson Ave
Manhattan, KS 66502
Ph: (785) 539-7531



Rate is \$109.95 for each room
Includes Breakfast
Group code: **KPTA**

Reserve by March 23rd for discounted rate.
*This hotel is located walking distance from
the Alumni center (.1 miles)*

Double Tree By Hilton

530 Richards Dr
Manhattan, KS 66502
Ph: (785) 539-5311



Rate is \$105.00 for each room.
Group code: **KPT**
**Reserve by March 23rd @5pm for
discounted rate**



*Parking passes are required to park at the
K-State Alumni Center. We recommend
reserving parking ahead of time.*

Day passes are \$6.

Call 785-532-7275 to reserve a pass.

The parking garage is located across the
street from the Alumni Center.



DOUBLETREE
by Hilton™

***Remember to mention TAX EXEMPT
and code**

If you need assistance please contact Amanda Winch at awinch@kpata.org

Upcoming KPATA Trainings



How Screen Time Impacts Speech and Language Development

PRESENTED BY: ANGIE NEAL, M.S.
CCC-SLP

March 28th
2-3PM

REGISTER HERE

*Please note new
date & time!*

Upcoming KPATA Trainings

Child Abuse & Neglect

MANDATED REPORTER TRAINING

KPATA IS PLEASED TO HOST A VIRTUAL TRAINING MODULE

APRIL 17th 1:00 - 2:30

ADRIANNE RALSTON

Kansas Children's Service League



Details of Training:

Child Abuse and Neglect: Recognition, Reporting & Supporting

Kansas law states that most professionals who work with children, including medical professionals, social workers, nurses, educators and others, are mandated reporters and are required by law to report suspicion of child abuse or neglect. This presentation will address areas of risk and protective factors, definitions of child abuse and neglect per Kansas law and provide examples of signs and symptoms. Participants will also learn the appropriate responses to suspected abuse or neglect, discuss what to do in the event of child disclosure and understand Kansas mandated reporter laws. This training is approved by KDHE for 1.0 child care licensing hours.

[REGISTER HERE](#)



2025 KPATA Training Calendar



**ATTEND ALL
TRAININGS
WITH A
CURRENT
KPATA
MEMBERSHIP
(TRAINING
PASS)**

**RENEW OR
PURCHASE**

[HERE](#)



2025 KPATA Trainings

★ February 20th

1:00pm - 3:00pm

Protection Orders in KS



March 28th

2:00pm - 3:00pm

Screen Time Impact
on Speech & Language



★ April 17th

1:00pm - 2:30pm

Child Abuse & Neglect



★ May 14th

1:00pm - 2:30pm

Substance Use

Disorder



NEW
UPDATE



NEW
UPDATE



Indicates a PATNC Quality
Standard Training Requirement

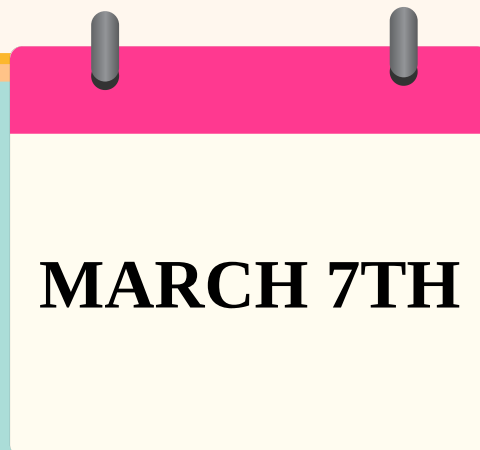
Free ASQ Trainings offered by KSDE



THE KANSAS STATE DEPARTMENT OF EDUCATION AND THE KANSAS PARENT INFORMATION RESOURCE CENTER (KPIRC) ARE OFFERING

NEW LIVE VIRTUAL TRAININGS TO DEEPEN EDUCATORS' KNOWLEDGE OF THE AGES & STAGES QUESTIONNAIRES (ASQ®).

THIS IS A FAST-PACED SESSION FOR PEOPLE WHO HAVE EXPERIENCE UTILIZING THE ASQ-3 AND/OR ASQ:SE-2 AND WHO WANT TO LEARN MORE ABOUT USING THE SCREENING INFORMATION TO IMPACT CHILDREN.



[VIEW DETAILS AND REGISTER](#)

KAIMH Conference



KAIMH Conference 2025
May 1 & 2, 2025
Salina, Kansas

Doors open 7:30 am both days,
sessions start 8:30 am.

Location: Trinity Methodist Church,
901 E Neal Ave., Salina, KS 67401

Thursday Keynote



Tabatha Rosproy

**"From Tiny Seeds Grow
Mighty Trees"**

10.5 hours of KDHE approved in-service

Friday Breakout Sessions

A Child's Brain; Some Assembly Required
Supervision for Clinical Services in Infant
Mental Health Services

The HOPEful Classroom: Integrating
ACEs and PCEs for Student Success

Breastfeeding's Impact on Mental Health

Safety in Early Childhood Visitation

Early Learning - Behavior Interventions
and Strategies

Community, Loneliness, Belonging, and
Othering, in Infant Mental Health

Evening Mixer

5:00 - 6:30 pm at the Salina Art Center, 242 S Santa Fe Ave
Join us for appetizers, mocktails, art and trivia as we celebrate
30 years of service!

Details and registration at kaimh.org



May 1, 2025

This day is filled with keynote speaker, Tabatha Rosproy and her presentation, "From Tiny Seeds Grow Mighty Trees." Tabatha is the 2020 National Teacher of the Year and early childhood educator. Her keynote will explore how to cultivate tiny seeds of joy in our lives that will sustain us through challenges and reinvigorate our passion. Tabatha will use her background in improvisational comedy and knowledge of play-based practices to help us take an active role living lives of joy!

We invite participants to join us for an evening mixer to celebrate our 30 years of service with appetizers, art, mocktails and trivia at the Salina Art Center in downtown Salina.

May 2, 2025

Breakout sessions this day include:
A Child's Brain; Some Assembly Required
Supervision for Clinical Services in Infant Mental
Health Services
The HOPEful Classroom: Integrating ACEs and
PCEs for Student Success
Safety in Early Childhood Visitation
Breastfeeding's Impact on Mental Health
Early Learning - Behavior Interventions and
Strategies
Community, Loneliness, Belonging, and
Othering, in Infant Mental Health
Nurturing Minds: An Introduction to PAX for Early
Childhood Mental Health

[**More Details Here**](#)

Join the KPATA Board



We Are Looking For

Dedicated individuals to fill positions on our
KPATA Board and committees!

OPEN POSITIONS:

- Vice President
- Treasurer
- Secretary
- NW Regional Director
- 1 NE Regional Director
- SW Regional Director
- SC Regional Director
- NC Regional Director
- NC Regional Director

Questions?

Contact Executive Director, Hilary Koehn, hkoehn@kpata.org or
President, Amber Dejmajal, adejmajal@kpata.org



[YES, I'M INTERESTED!](#)

All Members Meeting



SAVE THE DATE

ANNUAL MEETING OF THE MEMBERS

via ZOOM

THURSDAY, APRIL 3RD 2025

NOON - 1PM

*Join us to hear about the important work of
KPATA, vote on the slate of Board officers,
and provide feedback as a member!*

Breastfeeding Message of the Month



Kansas
Breastfeeding
Coalition, Inc.

BREASTMILK IS FOOD

DID YOU KNOW? BREAST MILK IS FOOD! JUST LIKE COW'S MILK IS FOOD FOR BABY COWS, HUMAN MILK IS FOOD FOR HUMAN BABIES. THE [CDC](#) DOES NOT LIST HUMAN BREAST MILK AS A BODY FLUID. BOTH [OSHA](#) AND THE [CDC](#) AGREE THAT HANDLING BREAST MILK DOES NOT REQUIRE SPECIAL PRECAUTIONS WHEN FEEDING AN INFANT.

CHILD CARE PROVIDERS DO NOT NEED TO STORE BREAST MILK IN A SEPARATE REFRIGERATOR OR WEAR GLOVES TO PREPARE OR FEED A BOTTLE/CUP OF BREAST MILK. BREAST MILK SHOULD BE TREATED LIKE ANY OTHER INFANT FOOD.

What have we been up to?

Did

YOU KNOW?

KPATA has had the opportunity to share about the importance of early childhood programs and their impact on Kansas families and children in a few different ways at the State level already in 2025:

- KPATA reps will share about the importance of PAT home visiting programs at the Early Learning Caucus on March 5th at the Capitol for Home Visiting Program Day.
- KPATA helped to organize and put together Home Visiting Program Day at the Capitol with other home visiting agencies/partners coming up on March 5th. The day will focus on home visitation programs and the incredible work that we are doing to support Kansas families and children!



March

JOIN US
KANSAS HOME VISITING PROGRAMS
DAY AT THE CAPITOL
MARCH 5, 2025
8:30 A.M. - 2 P.M.



UPCOMING EVENTS

MARCH

- 5TH - HOME VISITING PROGRAMS DAY AT THE CAPITOL
- 28TH - KPATA BOARD MEETING
- 28TH - SCREEN TIME TRAINING

APRIL

- 17TH - CHILD ABUSE TRAINING
- 18TH - KPATA BOARD MEETING
- 23RD - COLLABORATIVE LEARNING DAY

